

## FACTS & INFORMATION



MAY 2019

The Broward County Water Preserve Areas (BCWPA) project is part of the Comprehensive Everglades Restoration Plan (CERP). It consists of three components that were recommended as part of CERP:

- C-11 Impoundment
- C-9 Impoundment
- Water Conservation Area (WCA) 3A/3B Seepage Management

These components will provide various functions, including reducing seepage from WCA 3, reducing phosphorous loading to WCA 3A, capturing water lost to tide, and providing conveyance features for urban and natural system water deliveries. These functions will be achieved by separating stormwater from seepage collected from WCA 3 and diverting stormwater from Western C-11 Basin and the C-9 Basin to the impoundments.

### PROJECT PURPOSE

The project is designed to perform two primary functions:

- Reduce seepage loss from Water Conservation Area (WCA) 3A/3B to the C-11 and C-9 basins.
- Capture, store, and distribute surface water runoff from the western C-11 Basin that has been discharged into WCA 3A/3B.

Additional project functions include maintaining existing level of service for flood mitigation, groundwater recharge, increasing spatial extent of wetlands, and improving hydroperiods and hydropatterns in WCA 3A/3B.

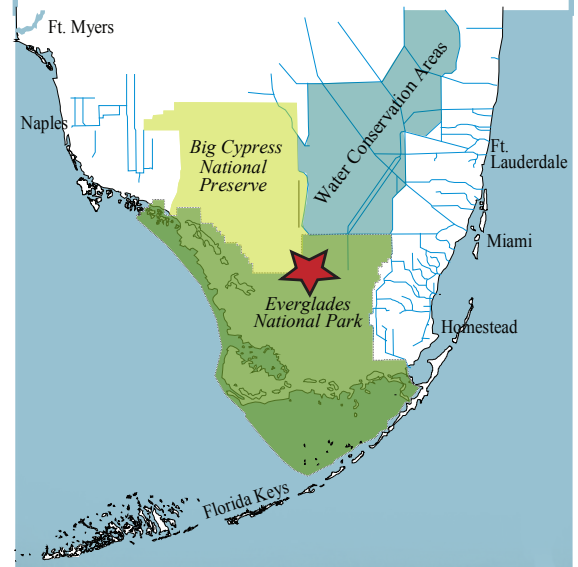
Existing water reservations will not be affected. Approximately 563,000 acres in WCA 3 and 200,000 acres in the greater Everglades will benefit from the project's implementation. The project will also benefit federally listed threatened and endangered species and many wading birds.

### PROJECT STATUS

The project was authorized by the Congress in the 2014 Water Resources Reform and Development Act (WRRDA). The initial construction contract—for the Northern Mitigation Area A Berm (MAAB) portion of the C-11 component—was completed in November 2018. Design for the C-11 component's remaining features is ongoing.

### PROJECT LOCATION

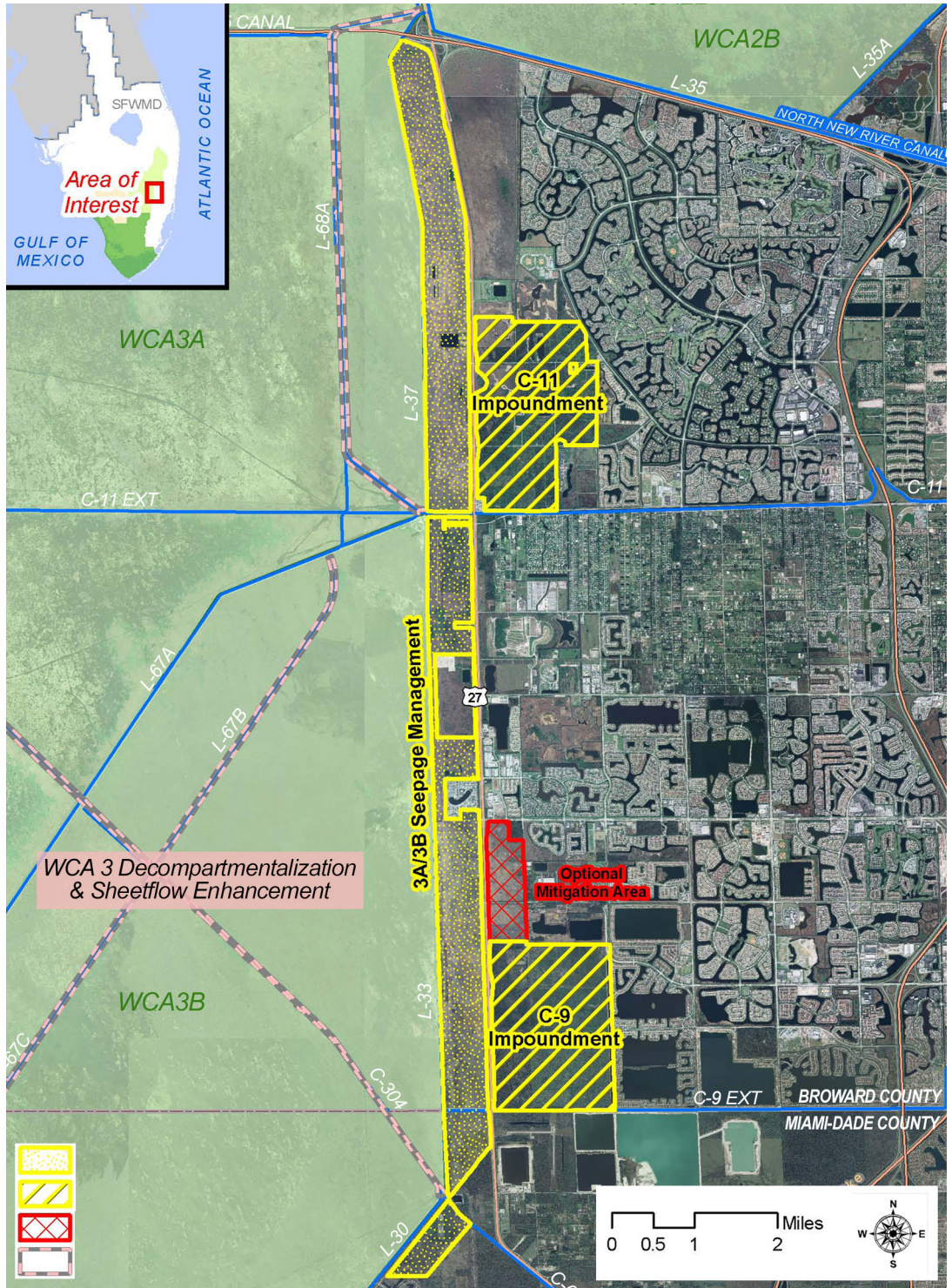
The project study area is located in western Broward and Miami-Dade counties in south Florida. The project lands are bordered by WCA 3A/3B, Interstate 75, and the Miami Canal (C-6), and are within the city limits of Weston, Pembroke Pines, Miramar, and the town of Southwest Ranches.





**THE SELECTED PLAN**

The selected plan includes two aboveground impoundments, associated pumps, and water control structures. The C-11 Impoundment has an effective interior storage of 1,068 acres; two wetland marsh mitigation areas north of the C-11 Impoundment have 488 acres of wetland marsh. The C-9 Impoundment has an effective interior storage of 1,641 acres. The 4,353-acre WCA 3A/3B Seepage Management Area will manage seepage loss from the WCA 3A/3B and connect the two impoundments with a conveyance canal. The three components work together to form a regional project that manages seepage loss, captures stormwater, and conveys water for other purposes.



**FOR MORE INFORMATION** <http://www.saj.usace.army.mil/Missions/Environmental/Ecosystem-Restoration/Broward-County-Water-Preserve-Areas/>



**ALLISON JOURA**  
 Project Manager  
 P.O. Box 4970  
 Jacksonville, FL 32232-0019  
 Allison.M.Joura@usace.army.mil  
 904-232-2805



**ELIZABETH CANEJA**  
 Project Manager  
 3301 Gun Club Road  
 West Palm Beach, FL 33406  
 ECaneja@sfwmd.gov  
 561-682-586

