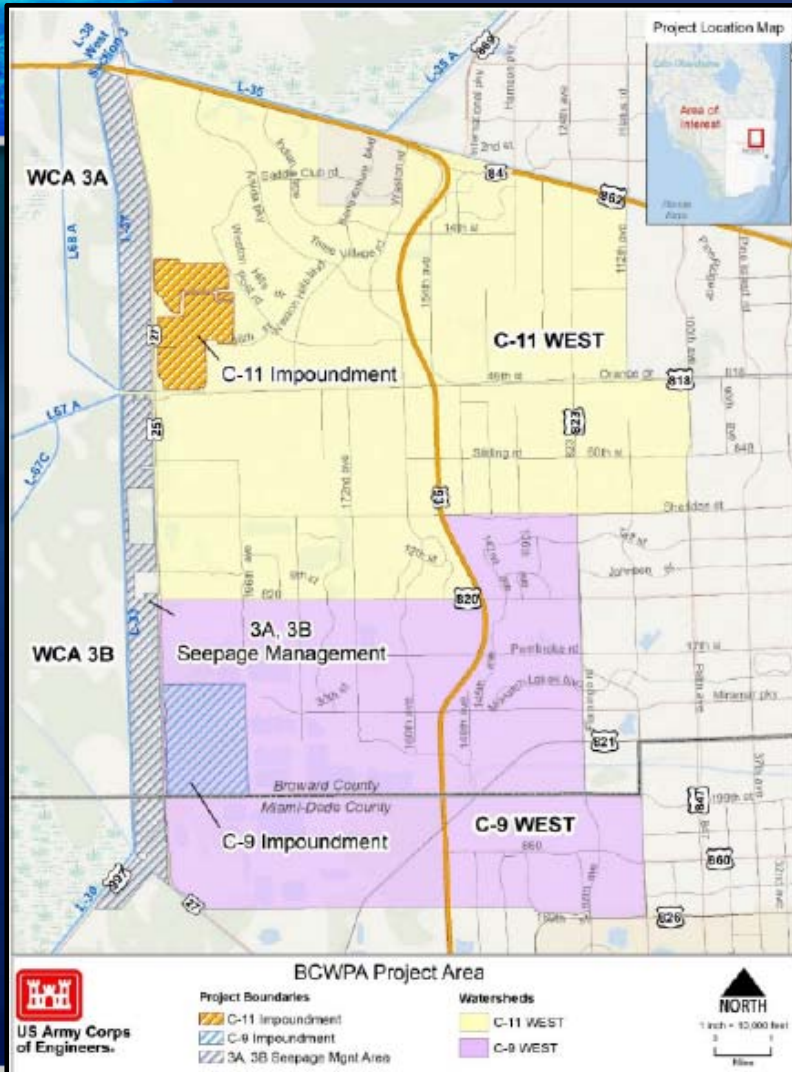




Broward County Water Preserve Areas, C-11 Impoundment Project Update

**Liz Caneja, Project Manager
South Florida Water Management District
Ecosystem Restoration & Capital Projects Division
City of Weston Commission Meeting
April 5, 2021**

Broward County Water Preserve Areas (BCWPA) Project



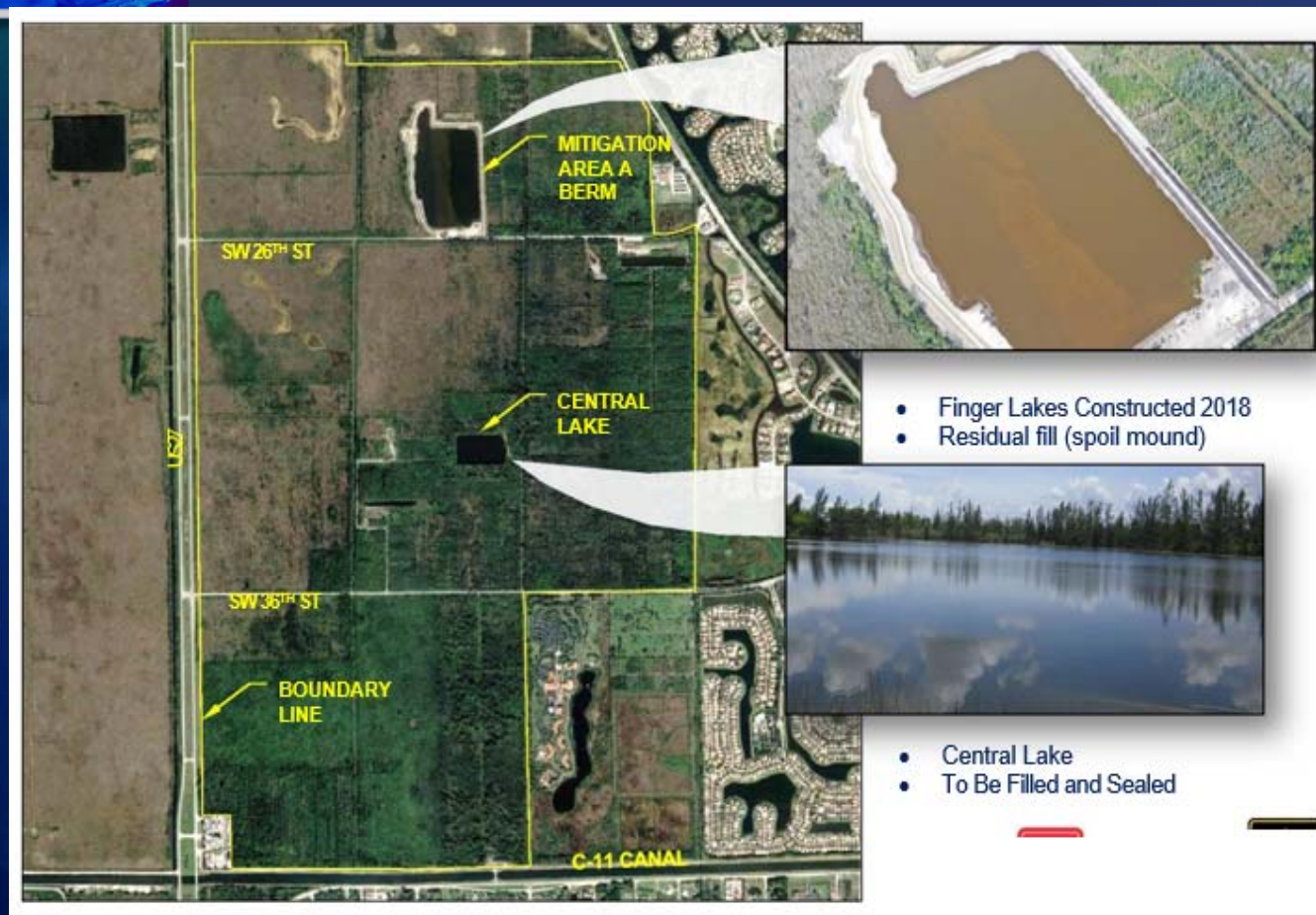
➤ Project Features:

- C-11 Impoundment
- Water Conservation Area 3A/3B Seepage Management Areas
- C-9 Impoundment

➤ Project Benefits:

- Reduce Seepage from Water Conservation Areas 3A/3B
- Reduce Nutrient Runoff
- Promote Groundwater Recharge
- Restore Wetlands

C-11 Impoundment Existing Features



- Finger Lakes Constructed 2018
- Residual fill (spoil mound)

- Central Lake
- To Be Filled and Sealed

➤ Existing Site Features:

- Mitigation Area A Berms
- Central Lake
- SW 26th Street (currently closed)
- SW 36th Street (to be closed)
- Bordered by C-11 Canal and US 27

C-11 Impoundment Existing Features



- SBA Cell Tower
- Access

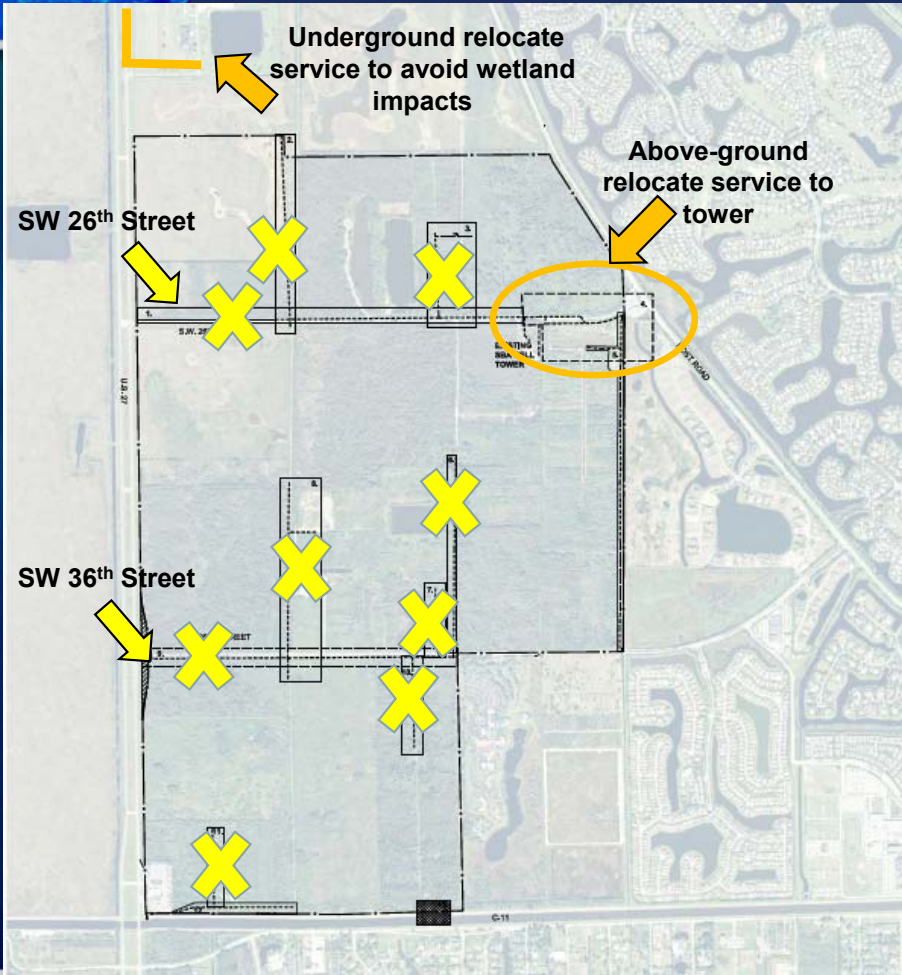


- N-S Canals
- Sequence of Construction

➤ Existing Site Features:

- SBA Communication Tower (to remain onsite)
- Series of Canals (some are to be filled to design elevation)

FPL Utility Relocation

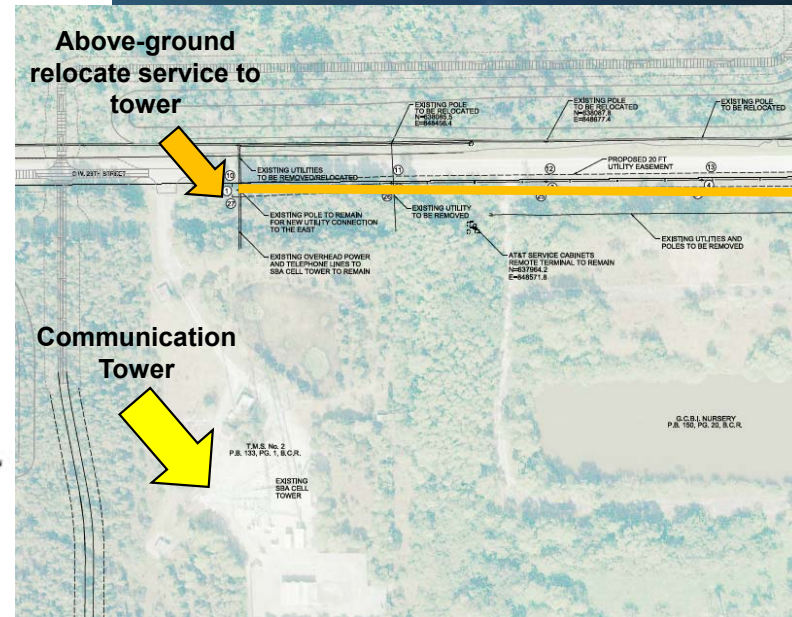


SHEET KEY NOTES:

1. REMOVE BURIED TELEPHONE, UNDEROVERHEAD ELECTRIC AND POLES
2. REMOVE ALL UTILITIES AND POWER POLES
3. REMOVE ALL UTILITIES AND POWER POLES
4. SEE SHEETS U-01 AND U-02 FOR LOCATION OF NEW UTILITY EASEMENT. REMOVE ALL UTILITIES NOT NOTED TO BE RELOCATED OR TO REMAIN.
5. REMOVE ALL UTILITIES AND POWER POLES
6. REMOVE ALL UTILITIES AND POWER POLES
7. REMOVE ALL UTILITIES AND POWER POLES
8. REMOVE ALL UTILITIES AND POWER POLES
9. REMOVE ALL UTILITIES AND POWER POLES
10. REMOVE ALL UTILITIES AND POWER POLES
11. REMOVE ALL UTILITIES AND POWER POLES
12. REMOVE ALL UTILITIES AND POWER POLES
13. FUTURE UTILITIES FOR PUMP STATION, ACCESS AND EASEMENT TO BE DETERMINED.

LEGEND:

- PROJECT LIMITS
- UTILITY REMOVAL AREAS
- UTILITY REMOVAL AND RELOCATION AREAS
- ▨ RIGHT OF WAY ACQUISITION AREA
- ▤ FUTURE UTILITY PLACEMENT FOR PUMP STATION
- EXISTING UTILITY LOCATIONS

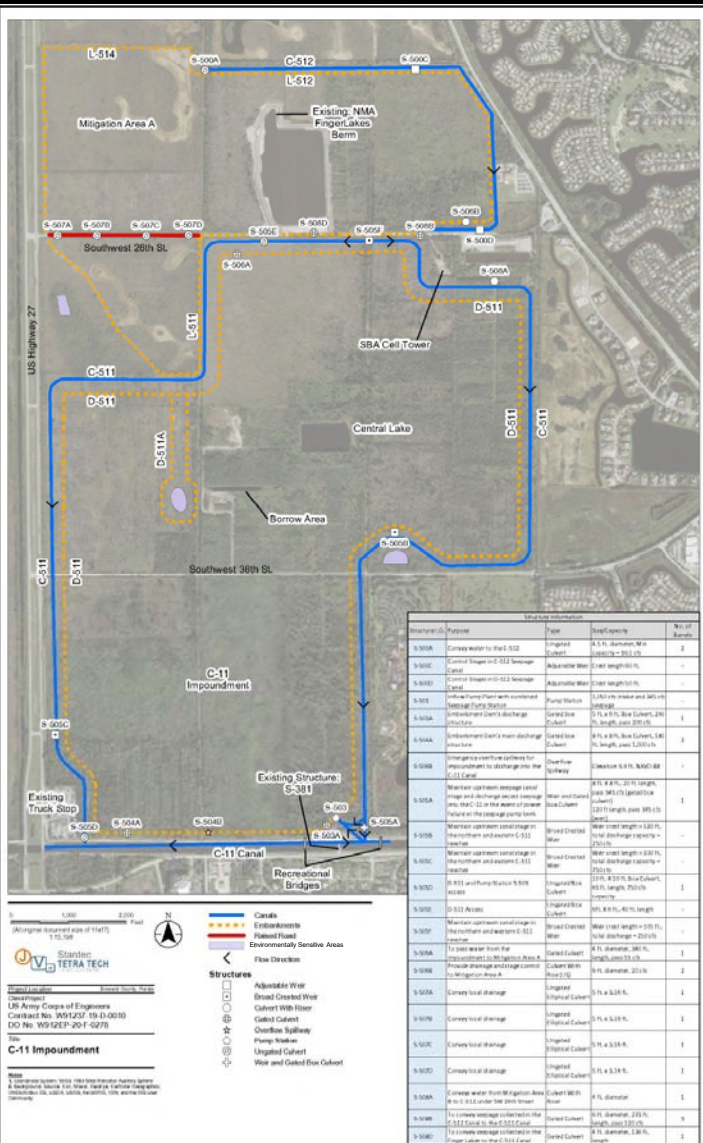


Onsite Relocate Near Communication Tower

C-11 Impoundment Preliminary Design Features

➤ Preliminary Design Features:

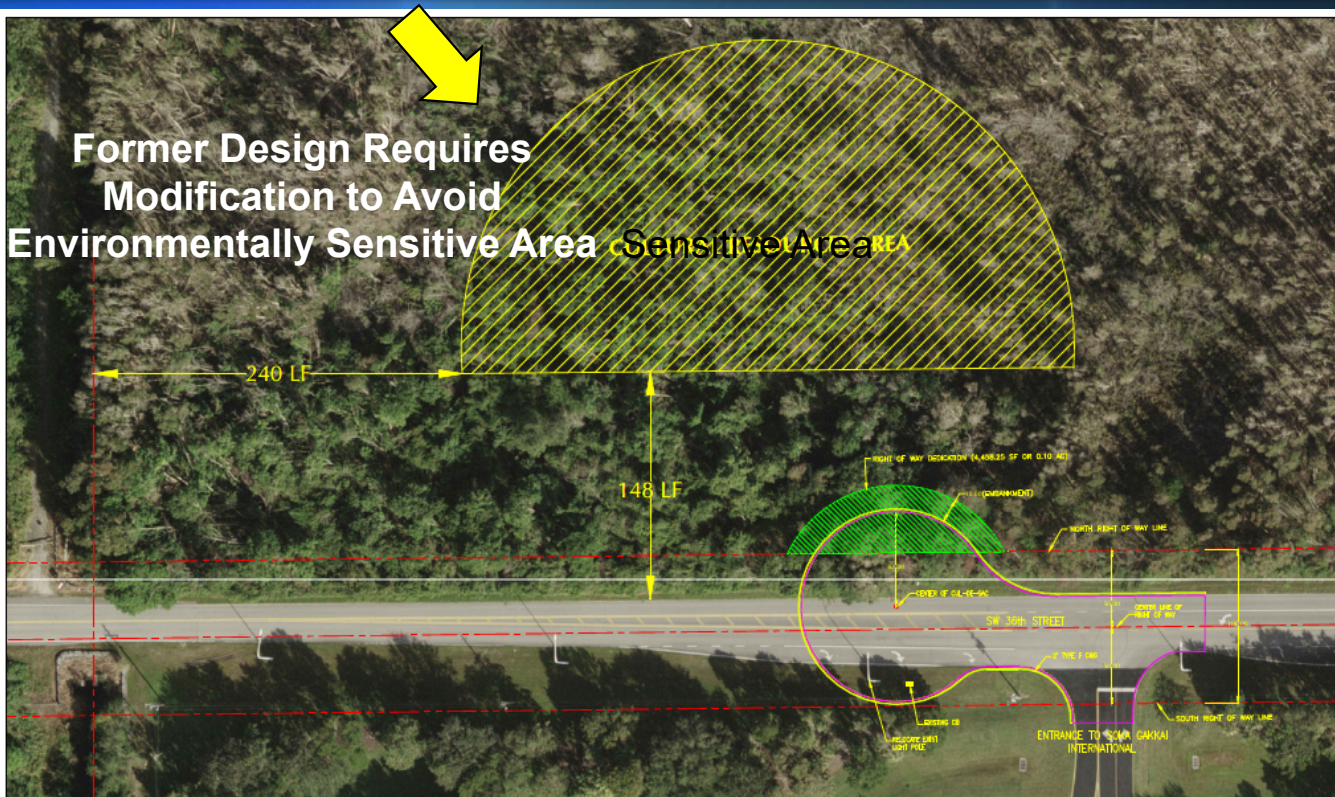
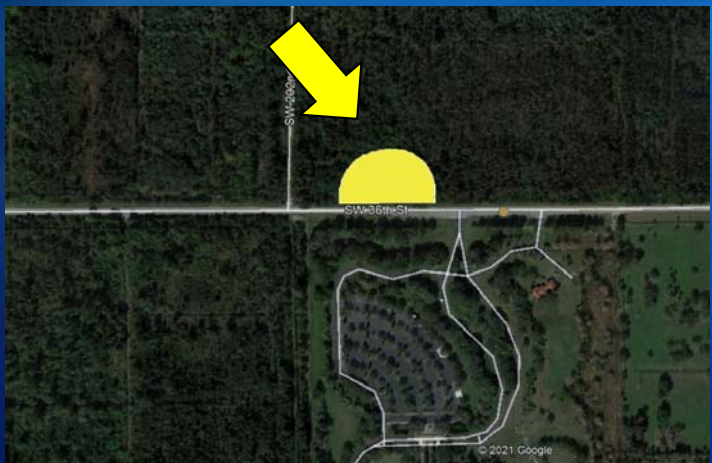
- Berms/Levees denoted in orange
- Seepage Canal denoted in blue
- 22 Structures (combination of culverts, pump stations, and weirs)



Structure ID	Purpose	Type	Size/Capacity	No. of Barrels
S-500A	Convey water to the C-512	Ungated Culvert	4.5 ft. diameter, 200 ft. length	2
S-500C	Control Stages in C-512 Seepage Canal	Adjustable Weir	Crest length 60 ft.	-
S-500D	Control Stages in D-512 Seepage Canal	Adjustable Weir	Crest length 50 ft.	-
S-503	Intake Pump Station with combined Seepage Pump Station	Pump Station	1,250 cfs intake and 345 cfs discharge	-

Request to Vacate SW 36th Street

Revised Location of Environmentally Sensitive Area



City of Weston
Public Works Department

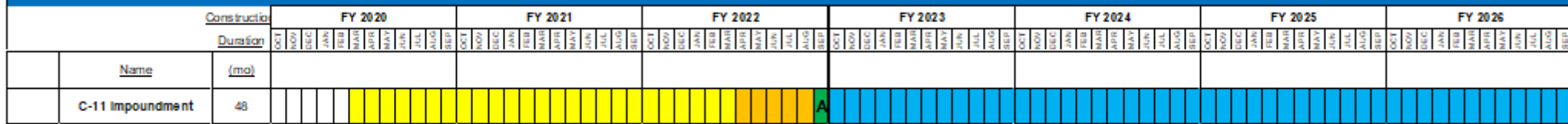
C-11 Impoundment Project
Broward County Water Preserve Areas Project
& Comprehensive Everglades Restoration Plan

Right of Way Dedication
62' radius cul-de-sac location at
west of entrance to Soka Gakkai
International property



Design and Construction Schedule

Broward County Water Preserve Area - Construction Overview



- Design
 - Award
 - Pre-Award Contracting
 - Construction Phase

↑
We are Here

- The USACE/SFWMD initiated design in October 2020
 - Preliminary Design Plans – February 2021
 - Intermediate Design Plans – August 2021
 - Final Design Plans – December 2021
 - Corrected Final Design Plans – March 2022
- SFWMD goal is to complete utility relocates, land acquisition, and road closure by December 2021
- 2022 we are estimated to begin construction at the C-11 Impoundment

Questions/Comments

Project Contacts

SFWMD

Project Manager: Elizabeth Caneja

ecaneja@sfwmd.gov

USACE

Project Manager: Allie Joura

Allison.M.Joura@usace.army.mil