

CERP: BROWARD COUNTY WATER PRESERVE AREAS (BCWPA) PROJECT UPDATES/ OPEN FORUM DISCUSSION

U.S. Army Corps of Engineers
Jacksonville District



U.S. ARMY



US Army Corps
of Engineers



- Welcome
- Presentations
 - Project Overview
 - Engineering
 - Procurement Strategy
 - Small Business Opportunities
 - Construction
- Questions and Answers

Event Schedule:

Site Visit and Open Forum/Presentation

- Meet at the Site Location: 1:00 - 2:30pm
- Overview Presentation: 3:30pm - 4:30pm

Field Site Visit Location:

Intersection:

SW 26th Street and Hwy 27 N

Weston, Florida

Open Forum/Presentation Location:

SFWMD Field Station

Ft Lauderdale Joe Lopez Jr Conf Rm

2535 Davie Access Rd

Plantation, FL 33317



U.S. ARMY

BROWARD COUNTY WATER PRESERVE AREAS PROJECT OVERVIEW

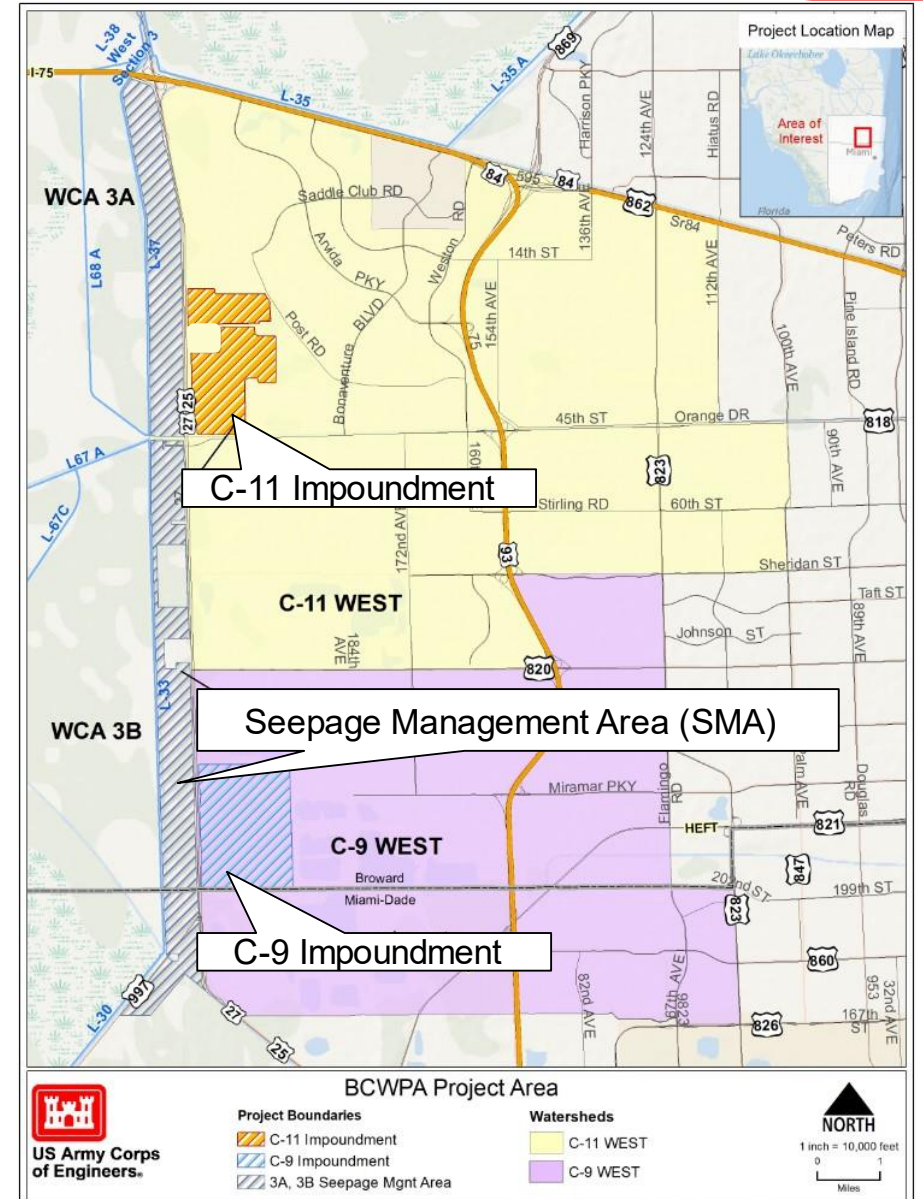


Project Goals:

- C-11 Impoundment is an ecosystem restoration project.
- All three project features work together to reduce discharges of runoff from developed areas in western Broward County into Water Conservation Area 3 which flows to the Everglades National Park
- Reduce excessive seepage of water out of the Everglades to developed areas in western Broward County
- The project will improve fish and wildlife habitat including that of 5 federally listed species
- 563,000 acres in Water Conservation Area 3 and 200,000 acres in the greater Everglades will benefit from project implementation

Project Key Information:

- Chief's Report – 21 May 2012
- Authorized WRRDA 2014
- PPA Signed August 2016





U.S. ARMY

BCWPA SCHEDULE UPDATES



Contract	Description	FY2024				FY2025				FY2026				FY2027				FY2028				FY2029				FY2030				FY2031				FY2032				FY2033				FY2034				FY2035				FY2036			
		1	2	3	4	1	2	3	4	1	2	3	4	1	2	3	4	1	2	3	4	1	2	3	4	1	2	3	4	1	2	3	4	1	2	3	4	1	2	3	4	1	2	3	4	1	2	3	4				
CNT 1	Mit A Berm																																																				
CNT 2.1	C-11 Impoundment Land Clearing	DESIGN				CONSTRUCTION																																															
CNT 2	C-11 Impoundment and Mitigation Area A	DESIGN				CONSTRUCTION												OTMP																																			
CNT 3	S-503 Pump Station and C-11 Impoundment Remainder	DESIGN					CONSTRUCTION															OTMP																															
CNT 4	WCA 3A/3B SMA			DESIGN						CONSTRUCTION												OTMP																															
CNT 5	C-9 Impoundment			DESIGN										CONSTRUCTION																		OTMP																					



U.S. ARMY

BROWARD COUNTY WATER PRESERVE AREAS

C-11 IMPOUNDMENT

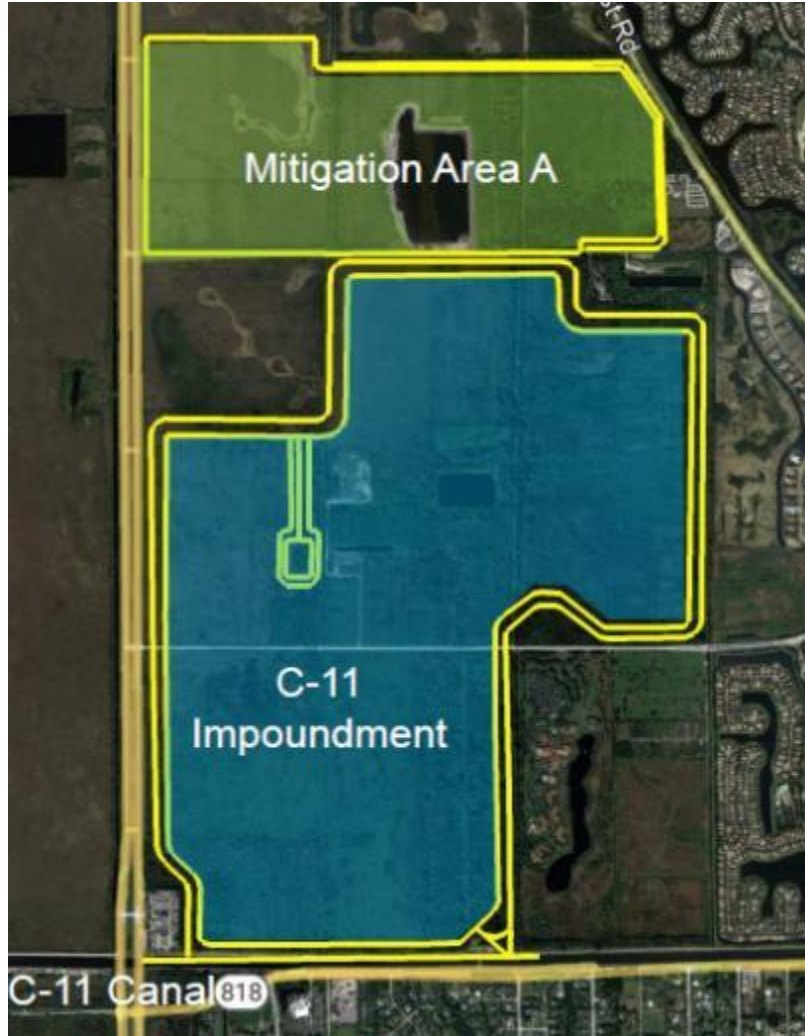


Overview of Schedule Changes for Contracts:

- CNT 2.1 - C-11 Land Clearing
 - Advertisement – July 2024
 - Bid Opening – August 2024
 - Award – September 2024
- CNT 2 – C-11 Impoundment and Mitigation Area A
 - PreSolicitation Conference
 - Advertisement – Late Spring 2025
 - Proposals Due – Summer 2025
 - Award September 2025
- CNT 3 – S-503 Pump Station and C-11 Impoundment Remainder
 - TBD – 2025 or 2026 Award

Impoundment Features

- 4,600 acre-ft area including the impoundment and mitigation areas
- 1,053 acres of above ground water storage, 4.7 ft above existing mean grade
- 400 acres of Mitigation Areas A
- 5 miles of Embankments
- 3.6 miles of Levee
- 6.5 miles of Canals
- Perimeter Cut Off Wall
- 12 Hydraulic Structures
- Environmentally Sensitive Area Avoidance Feature





U.S. ARMY

BROWARD COUNTY WATER PRESERVE AREAS

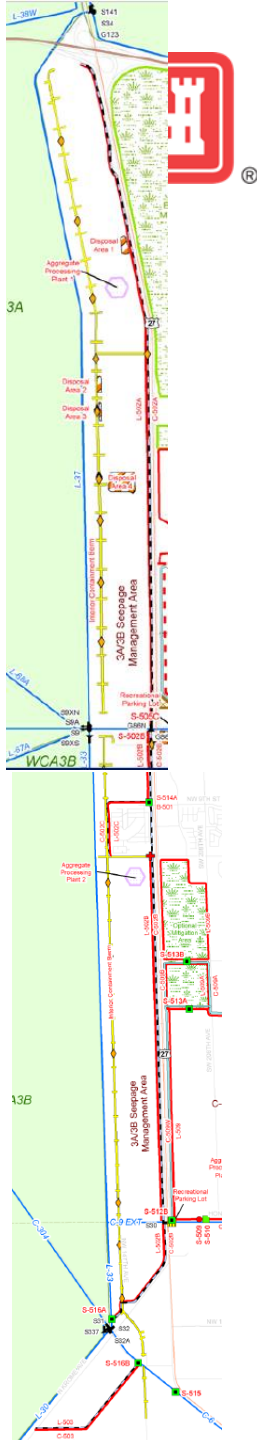
WCA 3A/3B SEEPAGE MANAGEMENT AREA

Status:

- 2025 – Surveys
- 2026 – Initiate Design
- Late 2028 Award

Features:

- 4,350-acre wetland area
- Levees, Canals
- Gated & Ungated water control Structures, Weirs
- Seepage Pump Station & Seepage Canal
- Habitat restoration through seasonal control of the hydroperiod in the marsh
- Diversion conveyance canal that functions to transfer excess water from the Western C-11 Basin to the C-9 Impoundment





U.S. ARMY

BROWARD COUNTY WATER PRESERVE AREAS

C-9 IMPOUNDMENT



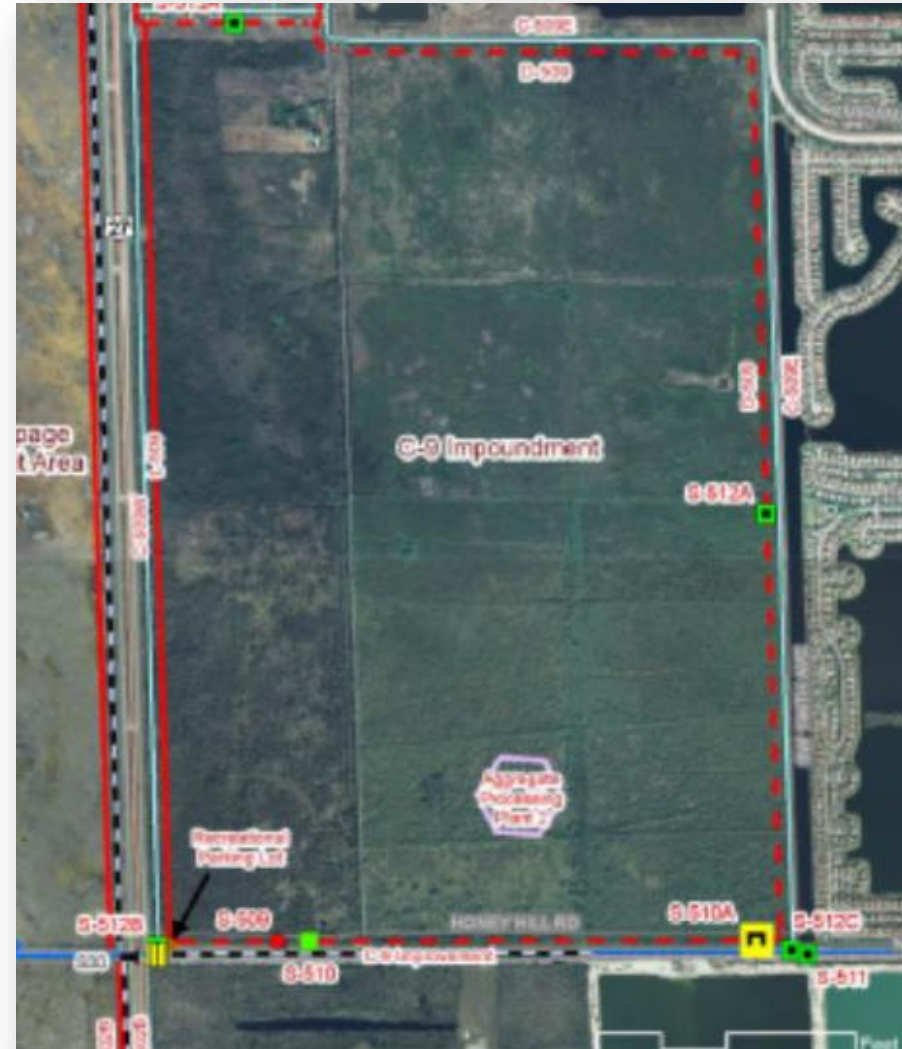
Status:

- 2025 or 2026 – Investigations And Design Start
- 2028-2029 - Award

Features:

- 1,600 acres of interior storage
- Inflow and seepage pump stations
- 7 water control structures
- Levees
- Canals

Construction of all three features: C-11 Impoundment, Seepage Management Area, and C-9 Impoundment are needed for full operation of CEPP by 2035.





U.S. ARMY

BROWARD COUNTY WATER PRESERVE AREAS PROJECT LOCATION





U.S. ARMY



CERP BCWPA, C-11 IMPOUNDMENT AND MITIGATION AREA A ENGINEERING

Presented by: Ryan Eastwood, Lead Engineer



OVERALL SITE PLAN

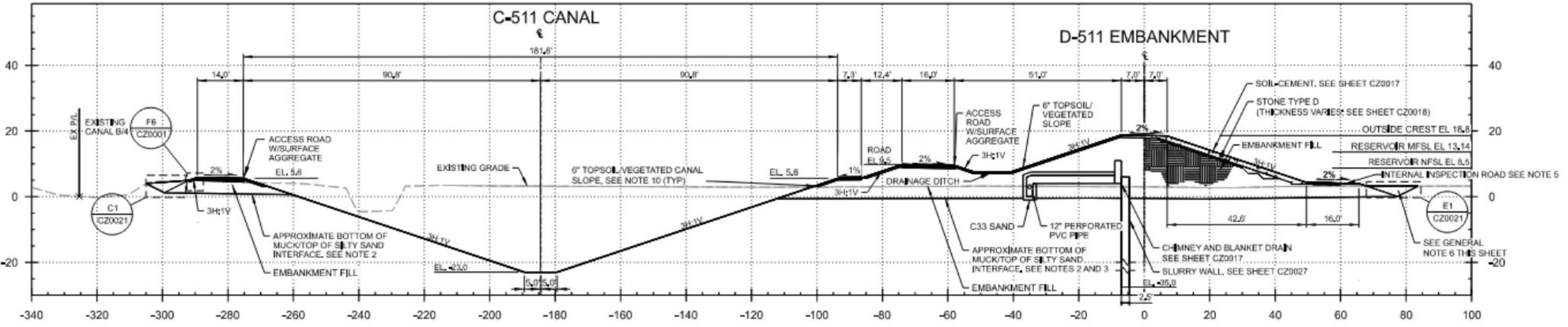


BUILDING STRONG®



U.S. ARMY

D-511 Impoundment Dam Embankment Section



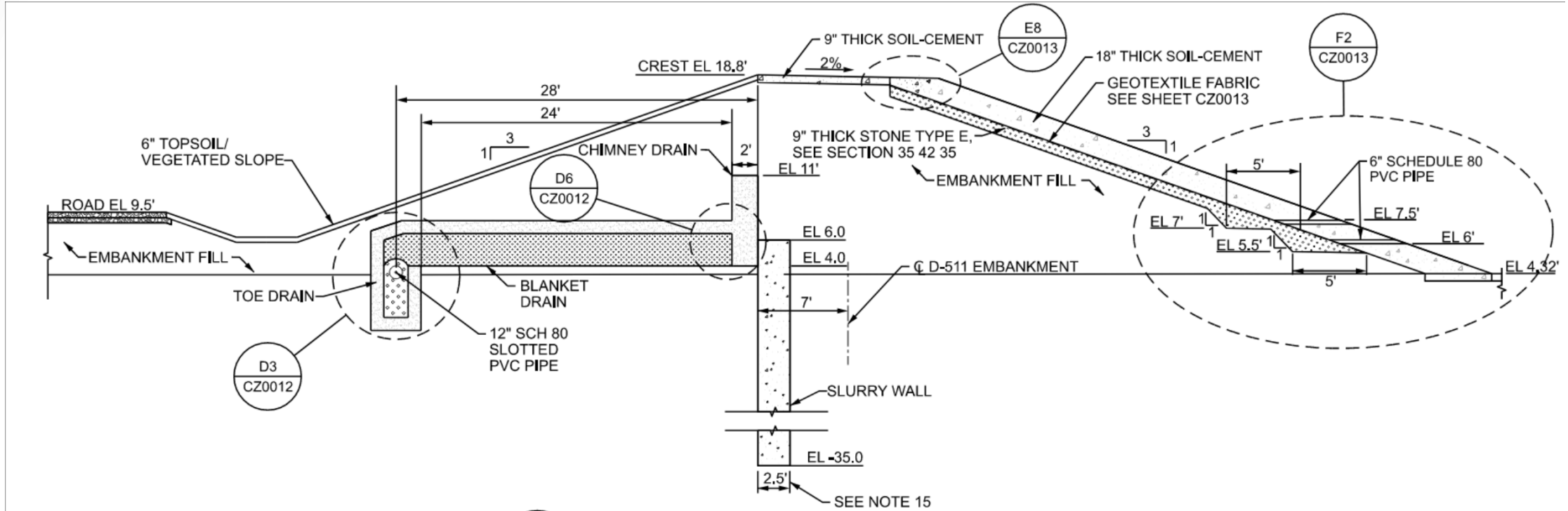
BUILDING STRONG®



U.S. ARMY



D-511 Impoundment Dam Embankment Section



F2 SECTION (TYP.) - D-511 EMBANKMENT WITH TOE DRAIN
SCALE: NTS

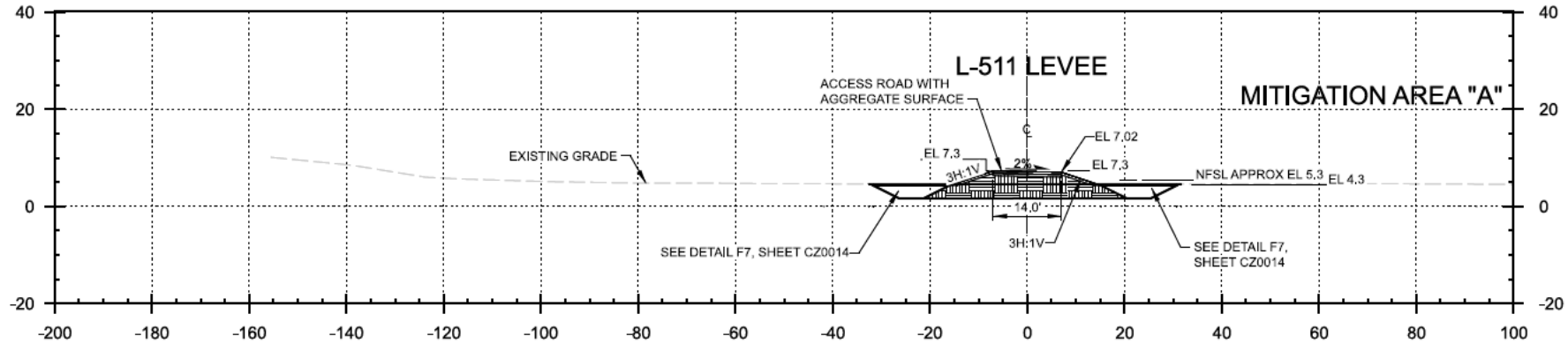


BUILDING STRONG®

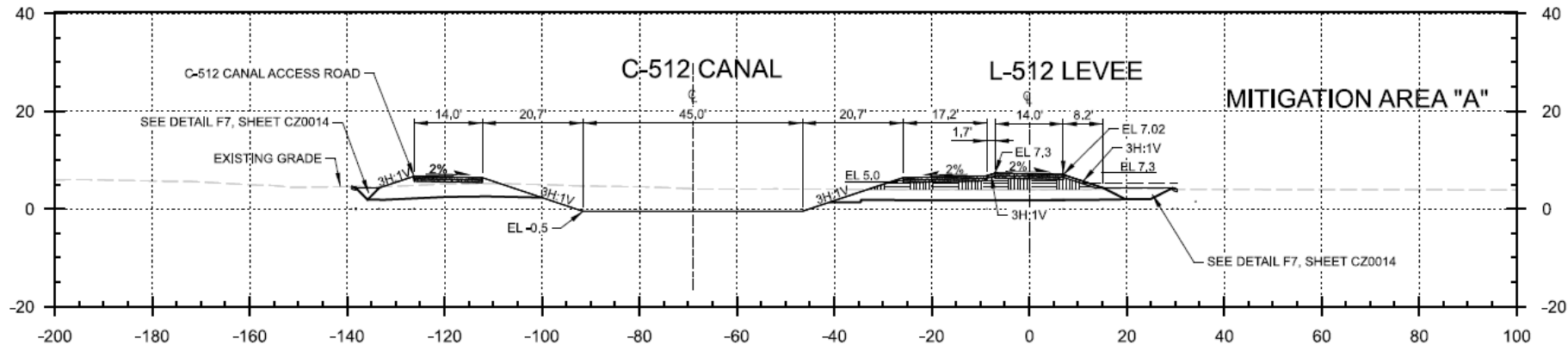
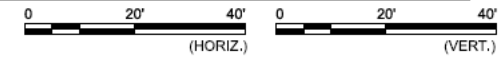


U.S. ARMY

L-511 and L-512 Levees Mitigation Area "A" Sections



F1 TYPICAL CROSS SECTION 13 - L-STA 601+70 to STA 653+00



A1 CROSS SECTION 14 - L-512 STA 658+00 to STA 727+80



U.S. ARMY

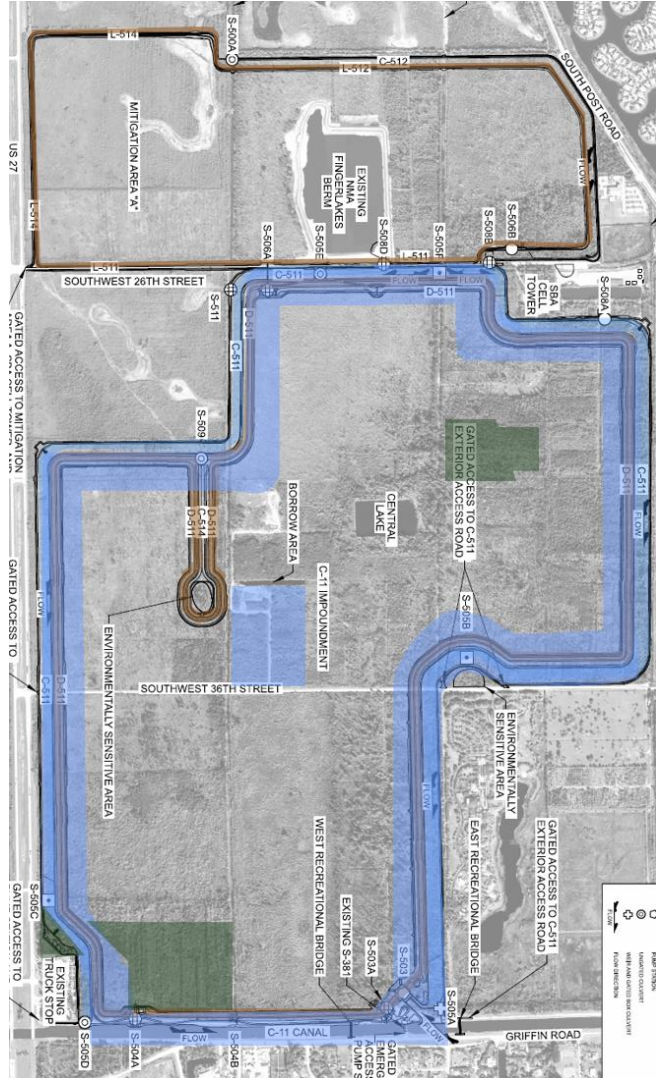


BUILDING STRONG®

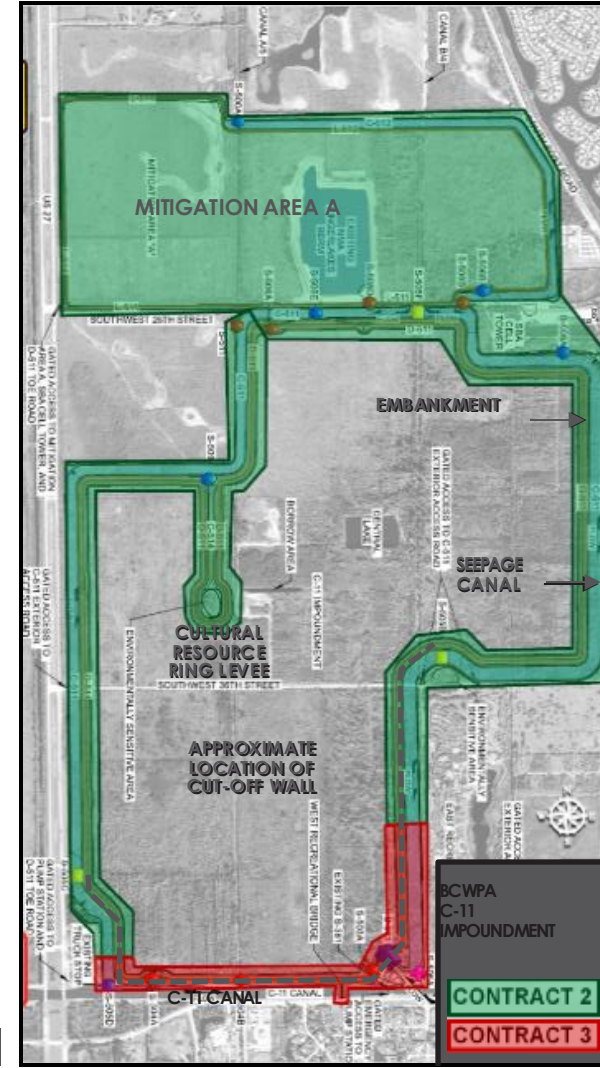


U.S. ARMY

BROWARD COUNTY WATER PRESERVE AREAS PROJECT LOCATION



CONTRACT 2.1



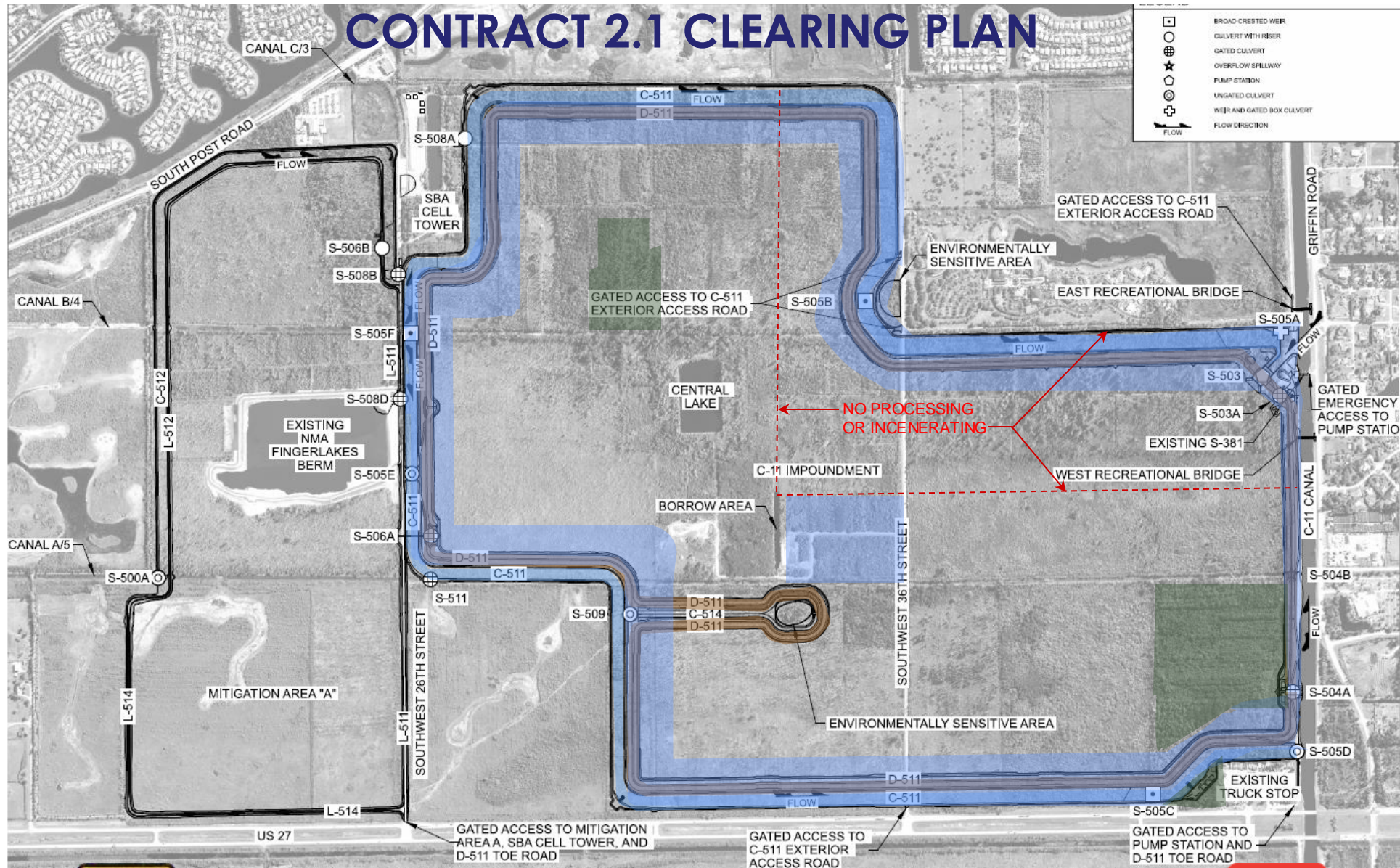
WCA

Tide



U.S. ARMY

CONTRACT 2.1 CLEARING PLAN



U.S. ARMY



BUILDING STRONG®



U.S. ARMY

CONTRACT 2.1 CONSTRUCTION CONSIDERATIONS



NEIGHBORS

- A sound protection fence is required along the FNCC property line.
- Contractor must limit noise to 70 dB at FNCC buildings.

BURNING AND DISPOSAL

- There is no open burning. Burning may be by “air curtain” low emissions, above ground incinerators.
- No incinerating or material processing in restricted area

FLORIDA BONNETED BAT

- Clearing must occur in green areas between Jan 1 and April 15, otherwise bat survey must be performed

MUCK / UNSTABLE SOILS

- Site is covered with muck layer between 1 and 10 feet thick.
- Poor site drainage will make clearing more challenging
- Likely to affect what equipment will be required
- Haul road section and extents should be considered

RESTRICTED WETLAND AREAS



U.S. ARMY



BUILDING STRONG®



U.S. ARMY

CONTRACT 2 & 3 CONSTRUCTION CONSIDERATIONS



LIMITED ACCESS AND STAGING

- Public access must be maintained to the west

SITE BOUNDED BY MARSH AND SURFACE WATER GEOTECHNICAL/SUBSURFACE CONDITIONS

- Muck/Unsuitable Soils
- Limestone Rock (No blasting)
- Cofferdams and Dewatering
- Extensive On-Site Borrow Required



U.S. ARMY



BUILDING STRONG®



U.S. ARMY



CERP BCWPA CNT 2, C-11 IMPOUNDMENT AND MITIGATION AREA A PROCUREMENT

Presented by: Ligaya Lowe, Contract Specialist



U.S. ARMY

CERP BCWPA CNT 2, C-11 IMPOUNDMENT & MITIGATION AREA A CONTRACTING TEAM



Manuela D. Voicu, Contracting Officer
Email: Manuela.D.Voicu@usace.army.mil

Ligaya Lowe, Contract Specialist
Email: Ligaya.M.Lowe@usace.army.mil

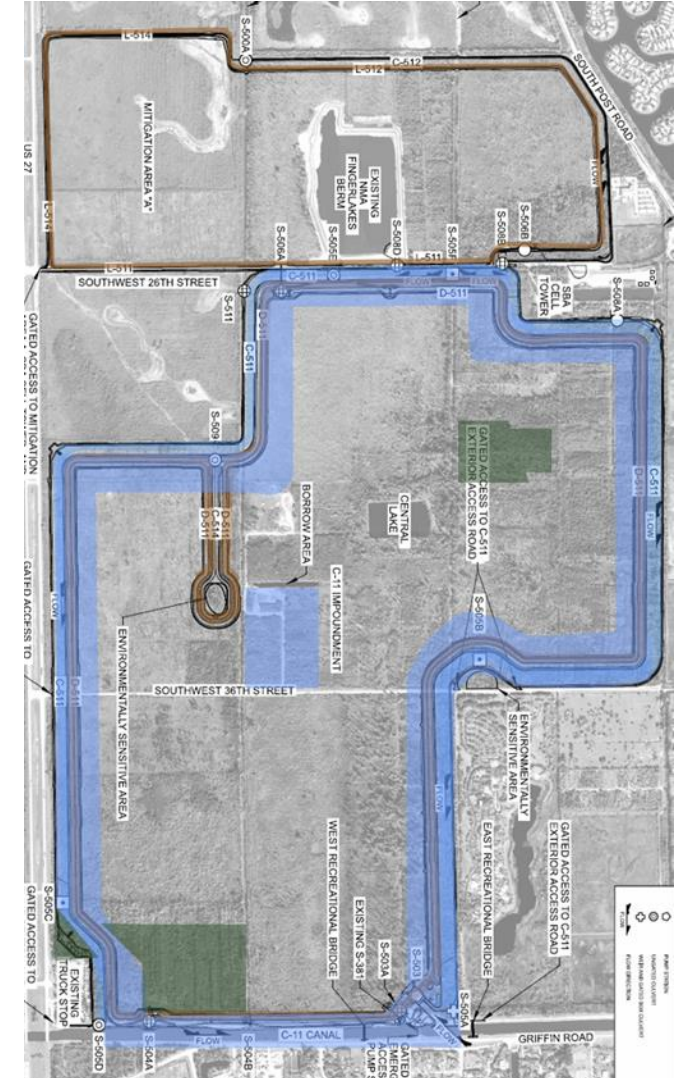


CERP BCWPA CNT 2.1, C-11 IMPOUNDMENT LAND CLEARING

U.S. ARMY

Information:

- Fiscal Year (FY) 2024 Award
- Clearing and Grubbing using Heavy Equipment.
- The applicable North American Industry Classification System (NAICS) code assigned to this procurement is 237990, Other Heavy and Civil Engineering Construction. The Small Business Size Standard for this project is \$45 million.
- The Estimated Magnitude of Construction is between \$10,000,000 and \$25,000,000.



CONTRACT 2.1



CERP BCWPA CNT 2, C-11 IMPOUNDMENT & MITIGATION AREA A ACQUISITION METHOD

FAR Part 15 - Contracting by Negotiation

- **FAR 15.002(b) - Competitive Acquisitions**
 - **Best Value Continuum**
 - **Tradeoff Process (FAR 15.101-1)**
 - **Factor 1 – Technical Merit**
 - **Factor 2 – Past Performance**
 - **Factor 3 – Small Business Participation**
 - **Factor 4 – Project Labor Agreement (PLA)**
 - **Factor 5 – Price**



U.S. ARMY



CERP BCWPA CNT 2, C-11 IMPOUNDMENT & MITIGATION AREA A

FACTORS TO BE EVALUATED

FACTOR 1 - TECHNICAL MERIT (continued)

Surface and Subsurface Water Management

- Describe approach for addressing high groundwater depth at the site, which will impact construction and inspection of key project components.
- Discuss approach for management of stormwater and dewatering with respect to shared discharge point and controlled discharge volume.

Cutoff Wall Construction

- Describe approach for installation of cementitious slurry wall through varying geology and groundwater conditions. - Describe quality control measures to be implemented to ensure compliance with the contract specifications.

Cast-in-Place Reinforced Concrete Structures

- Address the installation and monitoring of mass concrete and the approach for sourcing concrete.
- Describe quality control measures to be implemented for inspection of metal fabrications.

Soil-Cement Construction

- Describe approach for production and installation of soil-cement, including sourcing, processing, handling, and testing of materials for soil cement slope protection.
- Describe quality control measures to be implemented beginning with preparation of the embankment surface to final placement and testing of soil cement.

Protection of In Progress and Completed Work

- Describe how the completed or in-progress features of work will be protected from stormwater inundation and runoff.



CERP BCWPA CNT 2, C-11 IMPOUNDMENT & MITIGATION AREA A FACTORS TO BE EVALUATED

FACTOR 1 - TECHNICAL MERIT

Element 1 – Technical Approach Plan

At a minimum, the Technical Approach Plan shall address the three items listed below:

Describe the approach, sequence, timing and execution of activities for each of the associated main topics below. Please pay particular attention to the activities that are essentially important to the Corps under each topic. NOTE: the areas of particular interest should be an additional focus of discussion and not the sole area of emphasis.

Dam/Levee Foundation Preparation

-Discuss methods for excavation and preparation of the dam foundation and cutoff trench construction for inspection through varying soil, bedrock, and groundwater conditions.

Dam and Levee Embankment Construction

- Describe approach for sourcing, processing (crushing-screening), testing, storage, and handling of embankment materials.
- Describe approach for constructing embankment, including internal drainage features such as the chimney and blanket drain. Include specific means and methods to avoid keep different materials separated and uncontaminated.
- Describe quality control measures to be implemented to ensure embankment and drainage features meet contract requirements prior to placing successive lifts.

Canal Excavation

-Discuss approach for excavation of canals given the site-specific geological conditions.



CERP BCWPA CNT 2, C-11 IMPOUNDMENT & MITIGATION AREA A FACTORS TO BE EVALUATED

FACTOR 1 - TECHNICAL MERIT

Element 2 – Management Plan

At a minimum, the Management Plan shall address the three items listed below:

-Each offeror shall provide a narrative to describe how their labor, resources, subcontractors, and suppliers will be managed, supervised, coordinated, and used to ensure successful completion of the project. In addition, describe the proposed management structure to include quality control and safety teams. Also describe how the construction process will be managed to include but not limited to changes during construction, progress meetings, and the authorities and the delegations of authority within the team.

-Provide an organization chart of the key positions. The following positions shall be included in the organization chart: Project Manager, Construction Quality Control System Manager, Site Safety and Health Officer, Construction Superintendent, Professional Geotechnical Engineer, Data Manager, and Dewatering Specialist in accordance with the Specifications. Offeror shall NOT submit employee resumes. The organization chart shall also include the Quality Control and Safety Teams including their relationship and reporting within the overall organization. Offeror shall provide qualifications the company proposes for each key position included. This includes required education, specialized experience, and certifications. If the offeror proposes qualifications that exceed the specifications, the offeror must clearly call out this fact in its proposal. If the offeror is awarded a contract under this solicitation, the offeror's proposed qualifications for key positions will be incorporated into the contract.

-Offeror shall describe the procedures to ensure an adequate and qualified labor force will be in place during the entire life of the contract (to include but not limited to existing available labor pools, substitution of key personnel, etc.).



CERP BCWPA CNT 2, C-11 IMPOUNDMENT & MITIGATION AREA A

FACTORS TO BE EVALUATED

FACTOR 2 - PAST PERFORMANCE

Offerors may be required to provide a minimum of three but not more than five examples of completed projects to demonstrate that offerors and/or their major subcontractors (if applicable) have experience:

- (a) successfully constructing a new levee construction with a minimum height of 5 feet
- (b) successfully Constructing steel sheet pile water exclusion cofferdams to facilitate excavation dewatering
- (c) successfully Managing surface and subsurface water within a construction site where the subsurface is highly permeable (defined as hydraulic conductivity of 500 feet per day or higher, and groundwater level is at or near ground surface (within 5 feet of ground surface)).
- (d) successfully constructing reinforced, cast-in-place, concrete water control structures with operable gates.



U.S. ARMY



CERP BCWPA CNT 2, C-11 IMPOUNDMENT & MITIGATION AREA A FACTORS TO BE EVALUATED

FACTOR 3 - SMALL BUSINESS PARTICIPATION

It is expected that this factor will consist of:

- Proposed Small Business Participation Plan
- Past Utilization of Small Business Concerns

All offerors, both other than small business and small business shall complete a Proposed Small Business Participation Plan.

Offerors shall identify the extent to which Small Businesses (SBs) will be utilized in the performance of this contract, by proposing goals for the Small Business Participation Plan. These goals shall demonstrate their best effort for small business participation.



U.S. ARMY



CERP BCWPA CNT 2, C-11 IMPOUNDMENT & MITIGATION AREA A FACTORS TO BE EVALUATED

FACTOR 4 - PROJECT LABOR AGREEMENT (PLA)

In accordance with FAR Provision 52.222-33, Notice of Project Labor Agreement, which is incorporated into this solicitation, all offerors are required to (1) negotiate or become party to a project labor agreement with one or more labor organizations for the term of the resulting construction contract, (2) require its subcontractors to become a party to the resulting project labor agreement, and (3) submit said project labor agreement with their offer. At a minimum, the PLA must:

Bind the Offeror and Subcontractors engaged in construction on the construction project to comply with the project labor agreement;

Allow the Offeror and all Subcontractors to compete for contracts and subcontracts without regard to whether they are otherwise parties to collective bargaining agreements;

Contain guarantees against strikes, lockouts, and similar job disruptions;

Set forth effective, prompt, and mutually binding procedures for resolving labor disputes arising during the term of the project labor agreement;

Provide other mechanisms for labor-management cooperation on matters of mutual interest and concern, including productivity, quality of work, safety, and health.



U.S. ARMY



CERP BCWPA CNT 2, C-11 IMPOUNDMENT & MITIGATION AREA A FACTORS TO BE EVALUATED

FACTOR 5 - PRICE

The Price Factor is not rated. It is evaluated for reasonableness.

Offerors are advised that their business decision to submit a low-priced proposal can be considered in assessing their understanding or the risk associated with their proposal.

In accordance with FAR 19.1307, if applicable, the price evaluation preference for HUBZone small business concerns will be used for this acquisition.



U.S. ARMY

CERP BCWPA CNT 2, C-11 IMPOUNDMENT & MITIGATION AREA A MILESTONES



MILESTONES (Dates are estimates):

- Pre-Solicitation Notice – Spring 2025
- Advertisement – April 2025
- Proposals Due – May 2025
- Award Date – September 2025



U.S. ARMY



CERP BCWPA CNT 2, C-11 IMPOUNDMENT AND MITIGATION AREA A SMALL BUSINESS



U.S. ARMY

CERP BCWPA CNT 2, C-11 IMPOUNDMENT & MITIGATION AREA A SMALL BUSINESS OPPORTUNITIES



Kimberly Daniel Ray, Chief for Small Business Programs
Kimberly.S.DanielRay@usace.army.mil



JAX Small Business Website:
<https://www.saj.usace.army.mil/SmallBusiness/>



U.S. ARMY

CERP BCWPA CNT 2, C-11 IMPOUNDMENT & MITIGATION AREA A SMALL BUSINESS OPPORTUNITIES



❑ FAR 19.201(a) - Government policy

It is the policy of the Government to provide maximum practicable opportunities in its acquisitions to small business, veteran-owned small business, service-disabled veteran-owned small business, HUBZone small business, small disadvantaged business, and women-owned small business concerns. Such concerns must also have the maximum practicable opportunity to participate as subcontractors in the contracts awarded by any executive agency, consistent with efficient contract performance.

- Small Business Participation
- Subcontracting Plan (Large Business concerns only)

❑ DFARS 215.304(c)(i) - Evaluation factors and significant subfactors

In acquisitions that require use of the clause at FAR 52.219-9, Small Business Subcontracting Plan, other than those based on the lowest price technically acceptable source selection process (see FAR 15.101-2), the extent of participation of small businesses to include service-disabled veteran-owned small business concerns, HUBZone small business concerns, small disadvantaged business concerns, and women-owned small business concerns in performance of the contract shall be addressed in source selection. The contracting officer shall evaluate the extent to which offerors identify and commit to small business performance of the contract, whether as a joint venture, teaming arrangement, or subcontractor.



CERP BCWPA CNT 2, C-11 IMPOUNDMENT & MITIGATION AREA A SMALL BUSINESS PARTICIPATION PLAN VS. SUBCONTRACTING PLAN

Small Business Participation Plan/ Commitment Document <u>EVALUATION</u>	Subcontracting Plan <u>ASSESSMENT</u>
FAR 15.304, DFARS 215.304	FAR 19.704
Solicitation establishes requirements and evaluation criteria for SB participation	Must be assessed and determined acceptable by the Contracting Officer
Evaluation conducted IAW solicitation evaluation criteria	Must have 15 items defined in FAR 52.219-9
Required only for certain DoD-negotiated acquisitions	Required for all Federal contracts with applicable dollar values (subject to limitations and exceptions) and includes both negotiated and sealed bidding
Applies to ALL businesses	DOES NOT apply to Small Businesses
Can be based on anticipated subcontracting dollars or Total Contract Value (TCV) TCV preferred	Based on total planned subcontracting dollars

NOTE: Both are contractually binding.



U.S. ARMY



CERP BCWPA CNT 2, C-11 IMPOUNDMENT & MITIGATION AREA A SMALL BUSINESS / SUBCONTRACTING

WHAT DOES MAXIMUM PRACTICABLE OPPORTUNITY (MPO) LOOK LIKE?

- Breaking out contract work requirements
- Performing market research
- Solicit early and allow sufficient time to respond
- Mentor-protege program
- Advertising subcontracting opportunities on subnet
- Davis-Bacon prevailing wage rates is a FAR (contract) requirement
- Reach out to Procurement Technical Assistance Center (PTAC), SBA state, and Federal small business offices for assistance



U.S. ARMY



CERP BCWPA CNT 2, C-11 IMPOUNDMENT & MITIGATION AREA A SMALL BUSINESS / SUBCONTRACTING

POTENTIAL OPPORTUNITIES EXIST:

- Trucking (hauling)
- Earthwork (GPS based Excavation)
- Earthwork (Processing & Screening)
- Dewatering (Surface & Sub-Surface Water Management)
- Clearing & Grubbing (Tractors & Bushhogs, etc.)
- Concrete & Rebar
- Welding
- Metal Fabrication
- Electrical work (Electricians)
- General Laborers (Skilled & Unskilled)
- Heavy equipment operators (crane, dozers, excavators, etc.)
- Site Security
- Environmental Monitoring
- Material Testing



CERP BCWPA CNT 2, C-11 IMPOUNDMENT & MITIGATION AREA A SMALL BUSINESS / SUBCONTRACTING

MARKET RESEARCH - SAM.gov:

How can small businesses search for subcontracting opportunities?

- Interested Vendors List
- Contracts Awarded



The screenshot shows a contract opportunity listing on the SAM.gov website. At the top left is the US Army Corps of Engineers logo, a red square with a white castle icon. Below the logo is the text "US Army Corps of Engineers". To the right of the logo is a "Follow" button. Below the logo are three menu items: "Contract Opportunity", "Award Notices", and "Interested Vendors List", with "Interested Vendors List" being the active selection. The main title of the listing is "Comprehensive Everglades Restoration Plan, Broward County Water Preserve Areas, Contract 2, C-11 Impoundment and Mitigation Area A, Broward County, Florida". Below the title is a green circle with the word "ACTIVE" and a "Contract Opportunity" tag. At the bottom, the "Notice ID" is listed as "W912EP24Z0002".



U.S. ARMY



CERP BCWPA CNT 2, C-11 IMPOUNDMENT & MITIGATION AREA A PROCUREMENT ASSISTANCE

SBA Resources

- Business Opportunity Specialist
- Procurement Center Representative



Marketing Resources

- [Contract Opportunities on SAM.gov](#)
- [Contract Data on SAM.gov](#)
- [System for Award Management](#)
- [Dynamic Small Business Search System](#)
- [Subcontracting Networking System \(SubNet\)](#)



Other Resources

- [USASpending](#)
- [GSA Subcontracting Directory](#)
- [DoD Prime Contracting Directory](#)





U.S. ARMY



CERP BCWPA CNT 2, C-11 IMPOUNDMENT AND MITIGATION AREA A CONSTRUCTION

Presented by: Nestor Rivera, Miami Area Engineer

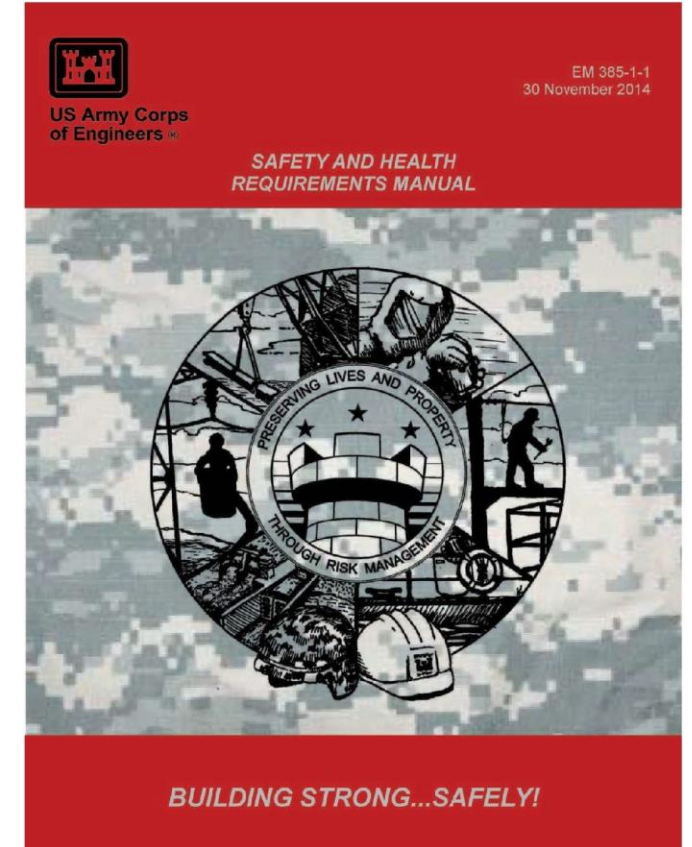


U.S. ARMY



CERP BCWPA CNT 2, C-11 IMPOUNDMENT & MITIGATION AREA A SAFETY REQUIREMENTS

- Contract will require compliance with the EM 385-1-1 Safety and Health Requirements Manual and contract section 01 35 26 Governmental Safety Requirements
- Qualified Site Safety Health Officers with demonstrated safety experience
- Accident Prevention Plan
 - Work is not allowed to start until plans are approved and the 3-phase system for associated definable feature of work (DFOW) has been conducted
- Activity Hazards Analysis for each DFOW and other major activities must be submitted and approved prior to start work
- Traffic Control and Hauling Plans
- Project site has shared roads for project access
- Mandatory weekly toolboxes and Monthly Supervisors Safety meetings
- Safety to be documented daily
- Mandatory use of Deficiency tracking system for Safety





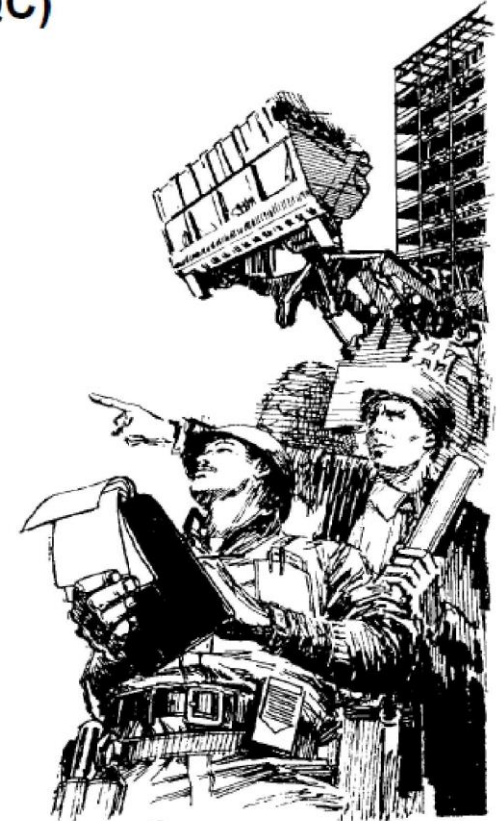
U.S. ARMY



CERP BCWPA CNT 2, C-11 IMPOUNDMENT & MITIGATION AREA A QUALITY REQUIREMENTS

- Contract will include section 01 45 04 Contractor Quality Control and 01 45 00 Resident Management System and 01 45 08 Data Management and Data Requirements.
- Contractor Quality Control Plan
- Accident Prevention Plan
 - Work is not allowed to start until plans are approved and the 3-phase system for associated definable feature of work (DFOW) has been conducted
- Qualified Quality Control Manager with CQM-C certification and demonstrated experience.
- Three Phase Control System
- USACE Validated laboratory for QC Testing
- QC documentation and daily reports

Contractor Quality Control (CQC)



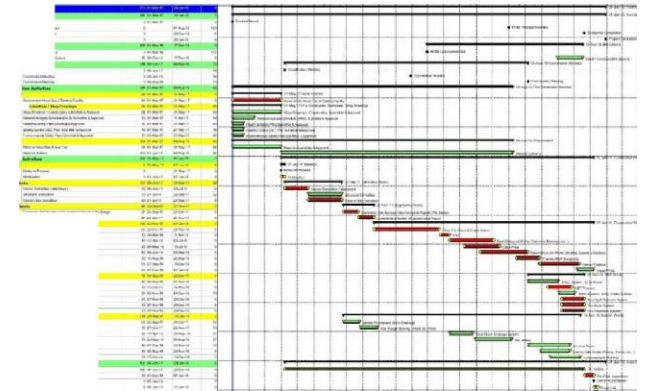


U.S. ARMY



CERP BCWPA CNT 2, C-11 IMPOUNDMENT & MITIGATION AREA A SCHEDULE REQUIREMENTS

- Contract duration is established in Contract clause 52.211-10, Commencement, Prosecution, and Completion of Work
- Contract duration will commence once NTP is issued
- Contract includes section 01 32 01 Project Schedule
- Qualified Project scheduler must be submitted for approval
- Submit Preliminary Project Schedule (PPS) for the first 90 days within 15 days after NTP
- Submit Initial Project Schedule (IPS) within 42 days after NTP
- IPS must be developed utilizing Standard Data Exchange Format (SDEF) codes for Resident Management System (RMS) transfers
- Submit Schedule of Values (SOV) along with the IPS
- Work cannot start until key preconstruction submittals are approved
- Monthly Periodic Schedule Updates





CERP BCWPA CNT 2, C-11 IMPOUNDMENT & MITIGATION AREA A ADMINISTRATIVE PROCEDURES

- Administrative procedures are outlined in contract section 01 30 00
- Preconstruction conference
- Preconstruction conference submittals
- Submittal Register
- Coordination Meeting
- Weekly Progress Meetings
- Coordination with other contracts
- Do not anticipate starting work without having preconstruction submittals approved and 3-phase control system started

CERP Broward County Water Preserve Areas Project, Contract 2
C-11 Impoundment and Mitigation Area A, Broward County, Florida FINAL DESIGN

SECTION 01 11 00

SUMMARY OF WORK
01/23

PART 1 GENERAL

1.1 REFERENCES

The publications listed below form a part of this specification to the extent referenced. The publications are referred to in the text by the basic designation only.

U.S. ARMY CORPS OF ENGINEERS (USACE)

GD8 Section 00 32, Geotechnical Data Report
for Broward County Water Preserve Area,
C-11 Impoundment, Weston, FL

SM 385-1-1 Safety and Health Requirements Manual

1.2 WORK COVERED BY CONTRACT DOCUMENTS

1.2.1 Project Description

The Broward County Water Preserve Area (BCWPA), Contract 2 consists of a portion of the overall C-11 Impoundment project. Contract 2 construction consists of dam and levee embankment, mitigation area, water control structures, environmental sensitive area (ESA) systems, lake backfill, drainage conveyance, ancillary features and associated clearing, grubbing, planting, borrow, and material processing.

Contract 2 is the first of two construction phases (combined with future Contract 3) to complete the overall C-11 Impoundment component of the BCWPA project. The overall completed C-11 Impoundment will be an above-ground earth reservoir targeted to have a total storage of 4,600 acre-feet with an effective impoundment area of approximately 1,053 acres and a normal pool water storage depth of approximately 4.7 ft.

The Contract 2 dam embankment (D-511) will have an approximate height of 15ft (crest elevation of 19.8 ft NAVD88). The Contract 2 portion of D-511 embankment will include roughly 4,800 LP of slurry wall along the southern alignments between stations 111+00 to 146+00 (east) and stations 204+00 to 218+00 (west). The slurry wall will be 41 ft tall (SL 6.0 ft NAVD88 to SL -35.0 ft MVD) with a typical width of 2.5 ft.

The proposed Mitigation Area 'A', is approximately 488-acres located north of the impoundment. Work includes approximately 3.5 miles of perimeter levee, clearing, grubbing, selective removal of invasive plant species and replating of native vegetation. It provides 89.7 acres of restored wetland, with 81.5 acres of marsh zone habitat and 8.2 acres of littoral zone habitat. Water levels within the mitigation area will fluctuate approximately 1.0 ft above average ground elevation (5.3 ft NAVD88). The levees surrounding the mitigation area will have an approximate height of 3 ft (crest elevation of 7.3 ft NAVD88).

Contract 2 includes 12 total Water Control Structures:

SECTION 01 11 00 Page 1